



Penelakut Tribe Phase I Environmental Site Assessment

COMMUNITY MEETING: 19 MARCH 2018

MEETING OUTLINE

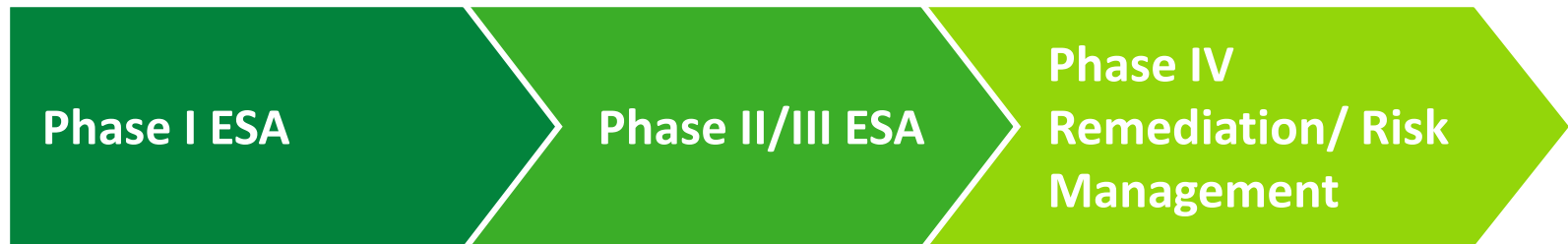
PENELAKUT TRIBE PHASE I ESA

1. Overview of Phase I Environmental Site Assessment (ESA)
2. Results of Phase I ESA for Penelakut Tribe Reserves
3. Recommendations and Next Steps
4. Questions and Community Discussion



What is a Phase I ESA?

- Phase I Environmental Site Assessment (ESA): identifies current or historical land use activities that have the potential to impact the quality of the soil, water, sediment or vapour
- Phase I ESA is the first step in a process to identify and manage contamination:



What we look for in a Phase I ESA

PENELAKUT TRIBE PHASE I ESA

APEC: area of potential environmental concern

- potential contamination of soil, water, vapour

Housekeeping Issues:

- Good practices to prevent potential contamination



What is included in a Phase I ESA?

PENELAKUT TRIBE PHASE I ESA

1. Historical Records Review
2. Interviews/Community Knowledge
3. Site Visits
4. Prepare Report
5. Community Meeting



Phase I ESA Process for Penelakut Tribe

PENELAKUT TRIBE PHASE I ESA

1. Historical Records Review:

- Historical air photographs

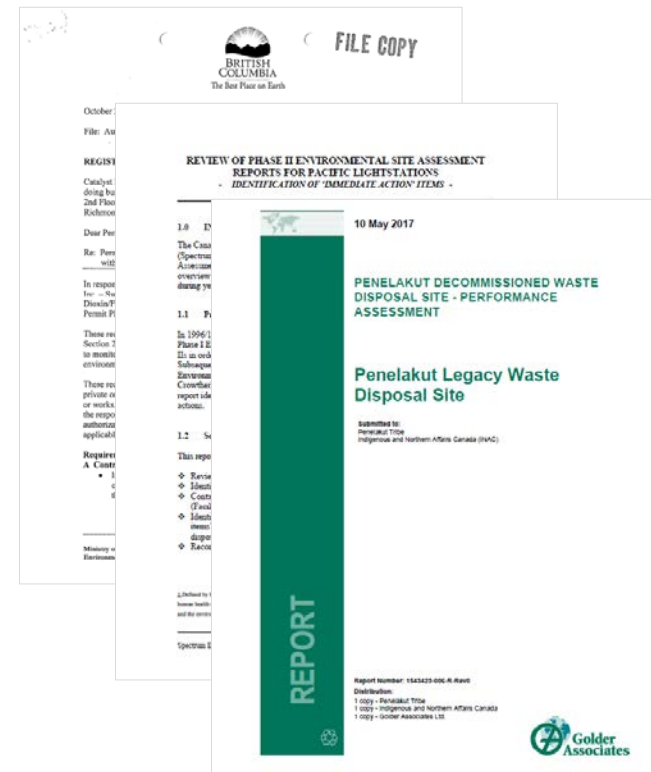


Phase I ESA Process for Penelakut Tribe

PENELAKUT TRIBE PHASE I ESA

1. Historical Records Review:

- Historical air photographs
- Property records
- Database searches
- Previous reports



Phase I ESA Process for Penelakut Tribe

PENELAKUT TRIBE PHASE I ESA

1. Historical Records Review
2. Interviews/Community Knowledge
 - Community Meeting
 - Interviews



Phase I ESA Process for Penelakut Tribe

PENELAKUT TRIBE PHASE I ESA

1. Historical Records Review
2. Interviews/Community Knowledge
3. Site Visits



Phase I ESA Process for Penelakut Tribe

PENELAKUT TRIBE PHASE I ESA

1. Historical Records Review
2. Interviews/Community Knowledge
3. Site Visits



Phase I ESA Process for Penelakut Tribe

PENELAKUT TRIBE PHASE I ESA

1. Historical Records Review
2. Interviews/Community Knowledge
3. Site Visits
4. Prepare Report
5. Community Meeting



RESULTS:

PENELAKUT TRIBE PHASE I ESA

Total of 10 Areas of Potential Environmental Concern (APECs) identified at 3 Reserves:

- 6 APECs at Tsussie 6
- 3 APECs at Penelakut Island 7
- 1 APEC at Galiano Island 9

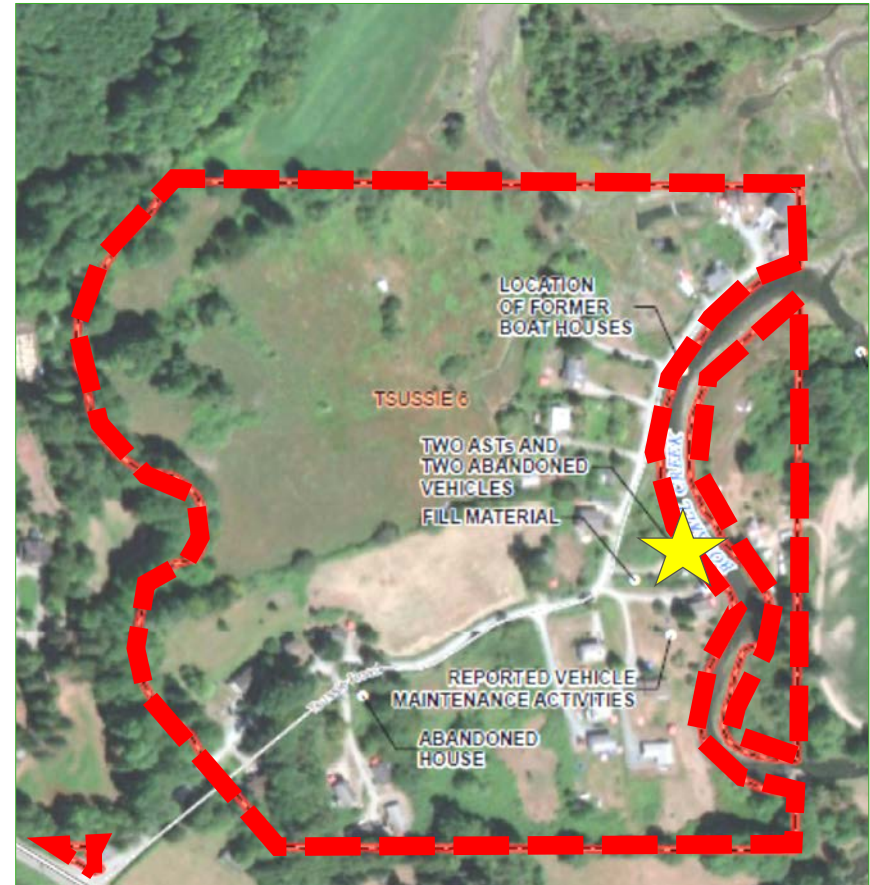


RESULTS: Tsussie 6

PENELAKUT TRIBE PHASE I ESA

APEC T06-1:

- Oil tanks and abandoned vehicles

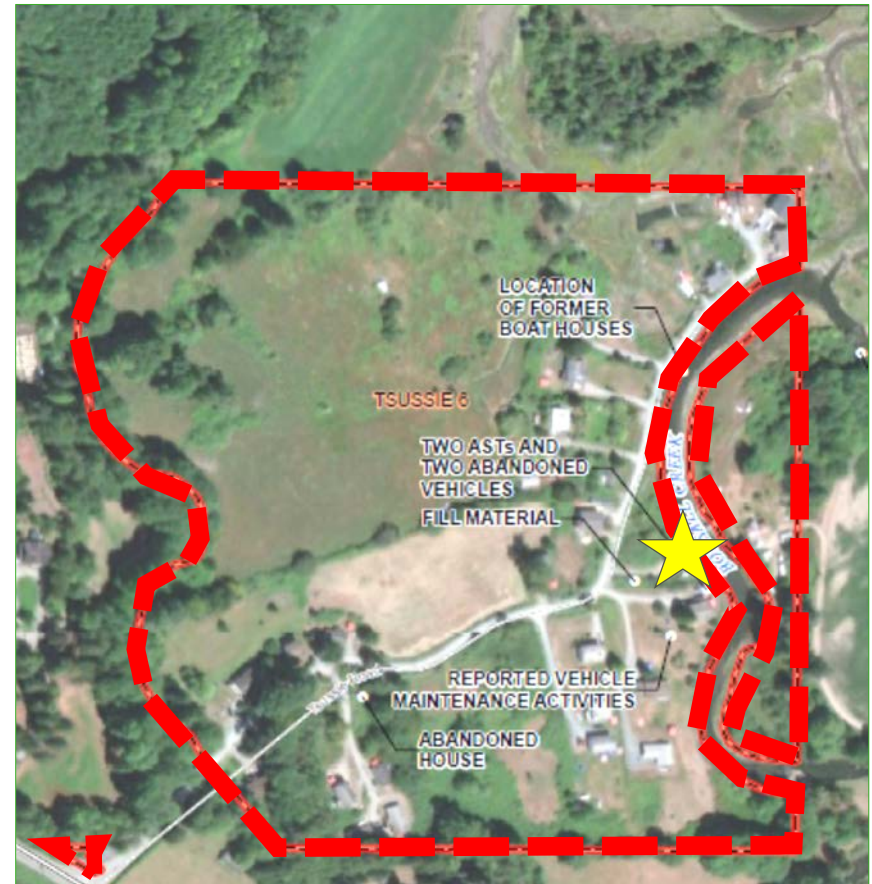


RESULTS: Tsussie 6

PENELAKUT TRIBE PHASE I ESA

APEC T06-1:

- Oil tanks and abandoned vehicles
- Recommendations:
 - Remove fuel tanks and abandoned vehicles
 - Soil sampling program to assess quality of soil in the area

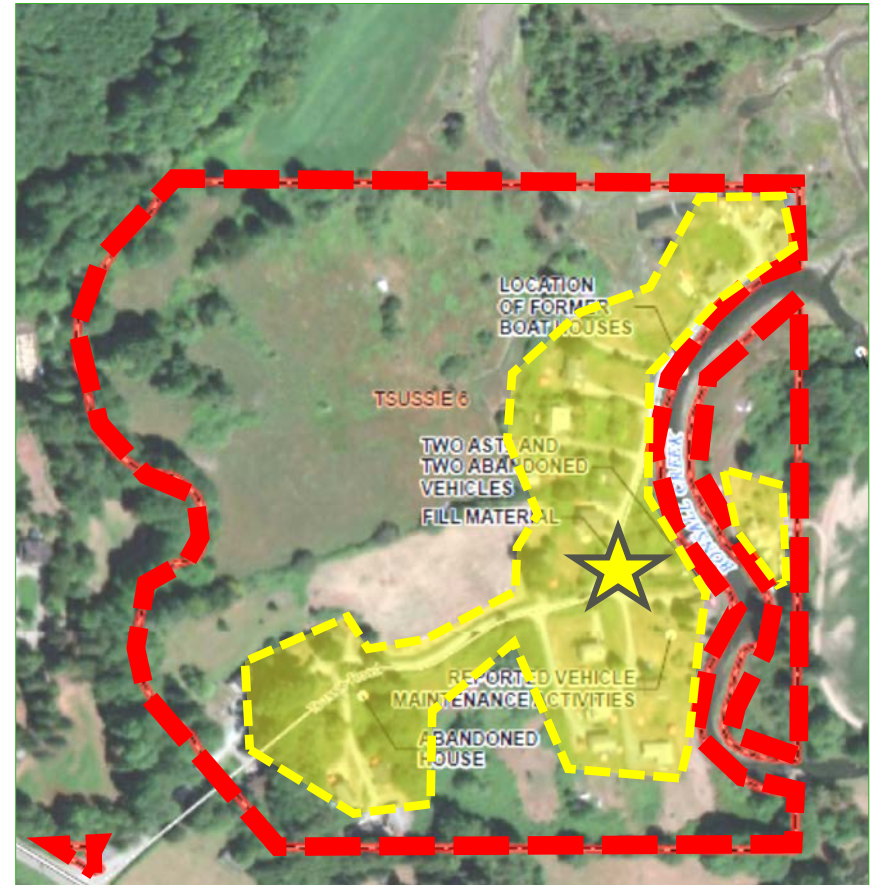


RESULTS: Tsussie 6

PENELAKUT TRIBE PHASE I ESA

APEC T06-2 / T06-3:

- Fill material of unknown quality

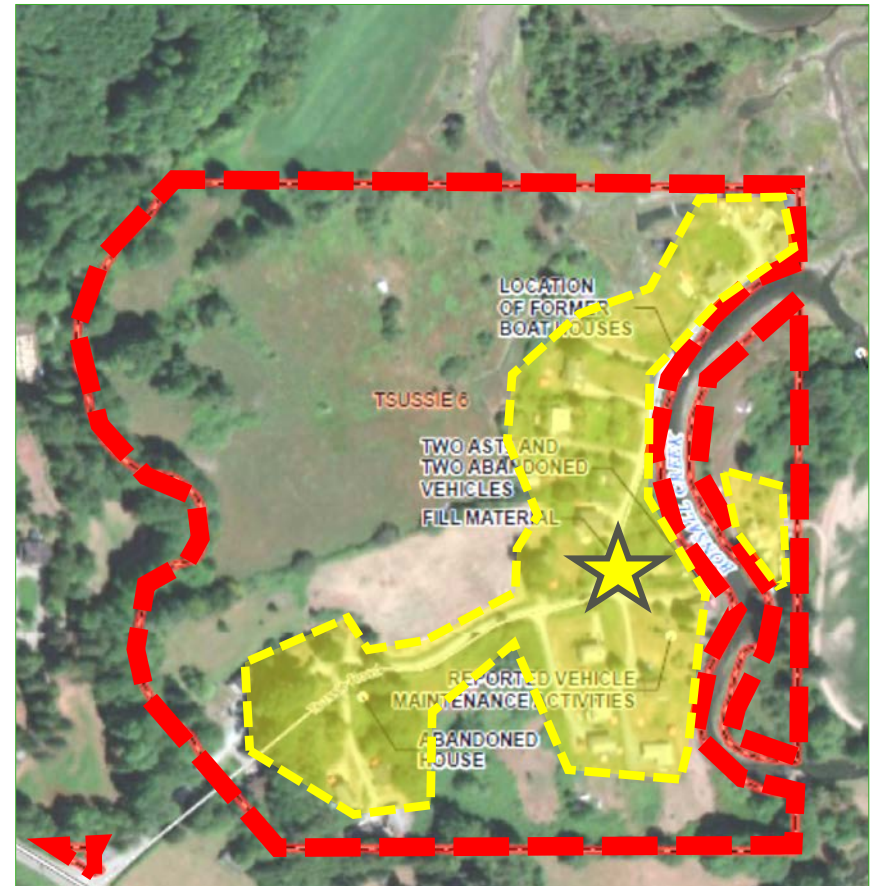


RESULTS: Tsussie 6

PENELAKUT TRIBE PHASE I ESA

APEC T06-2 / T06-3:

- Fill material of unknown quality
- Recommendations:
 - Soil sampling program to assess quality of fill material

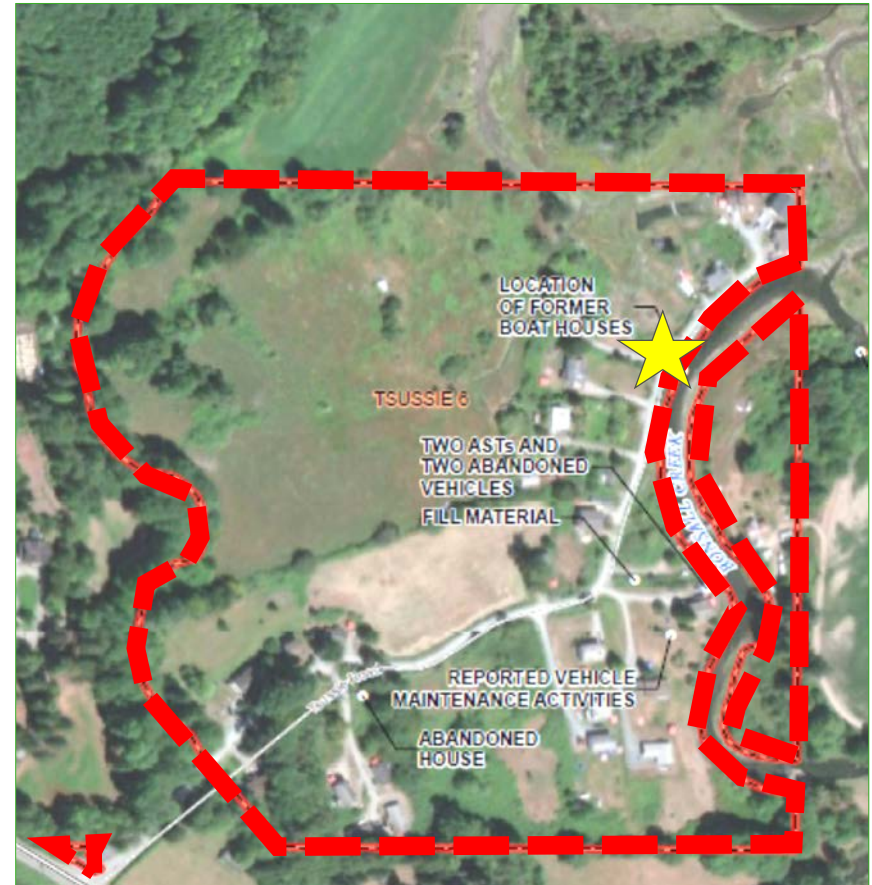


RESULTS: Tsussie 6

PENELAKUT TRIBE PHASE I ESA

APEC T06-4:

- Potential creosote wood pilings on Bonsall Creek

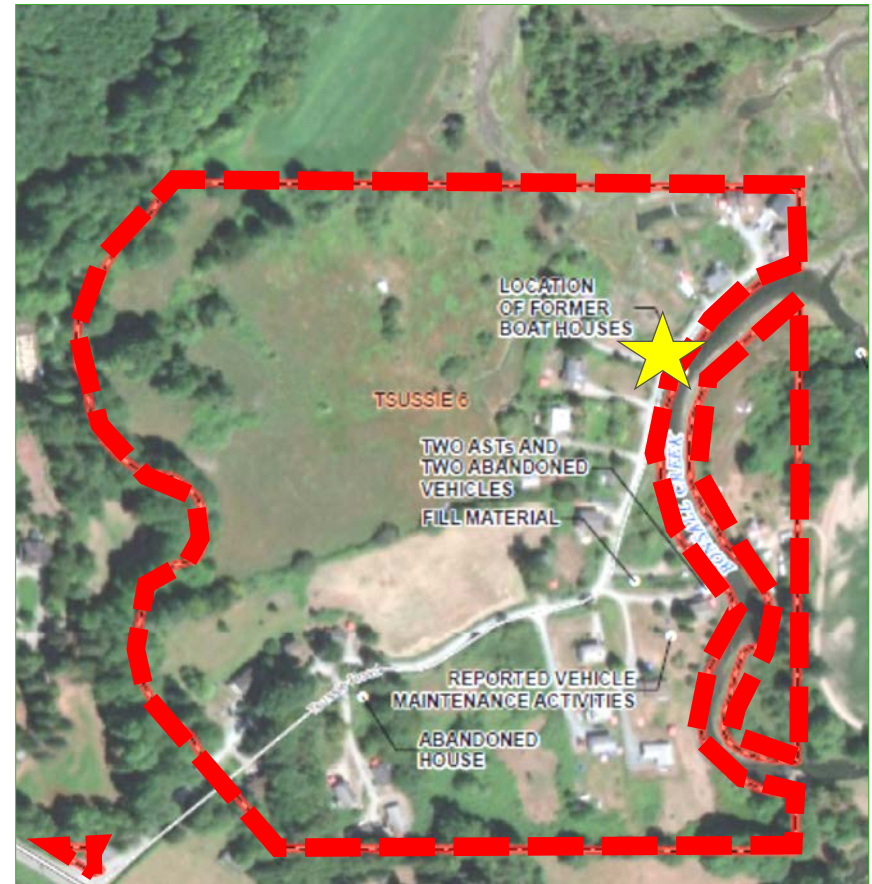


RESULTS: Tsussie 6

PENELAKUT TRIBE PHASE I ESA

APEC T06-4:

- Potential creosote wood pilings on Bonsall Creek
- Recommendations:
 - Remove wood pilings
 - Soil sampling program to assess quality of soil along bank of Bonsall Creek

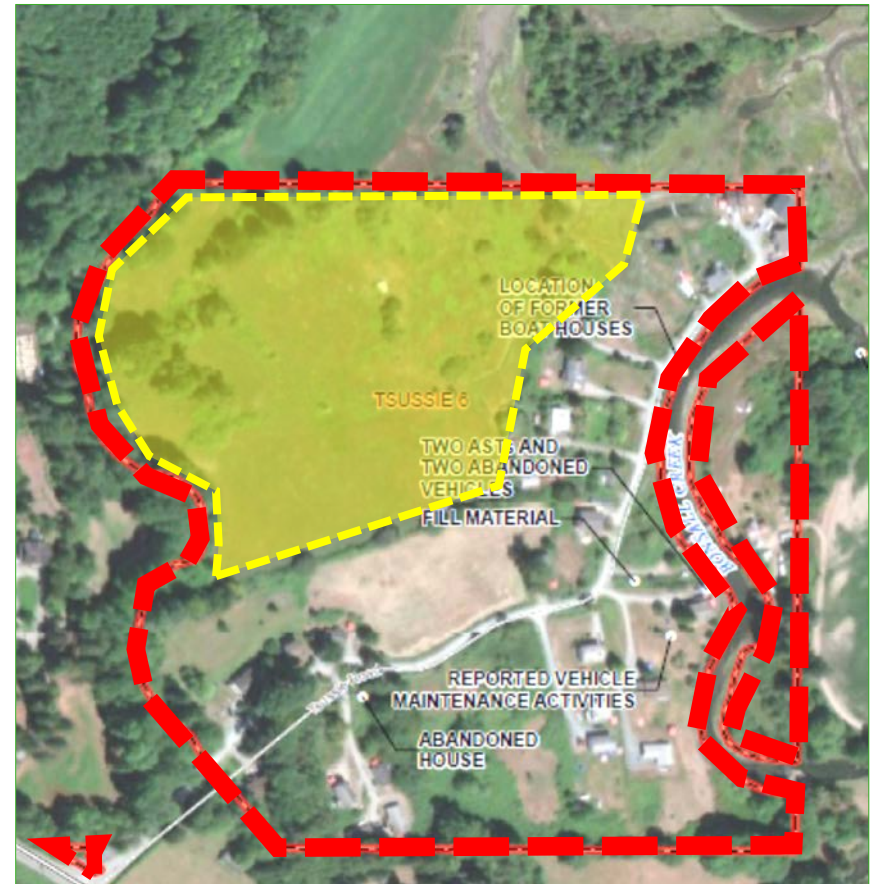


RESULTS: Tsussie 6

PENELAKUT TRIBE PHASE I ESA

APEC T06-5:

- Potential use of pesticides/herbicides
- Recommendations:
 - Soil sampling program to assess quality of soil

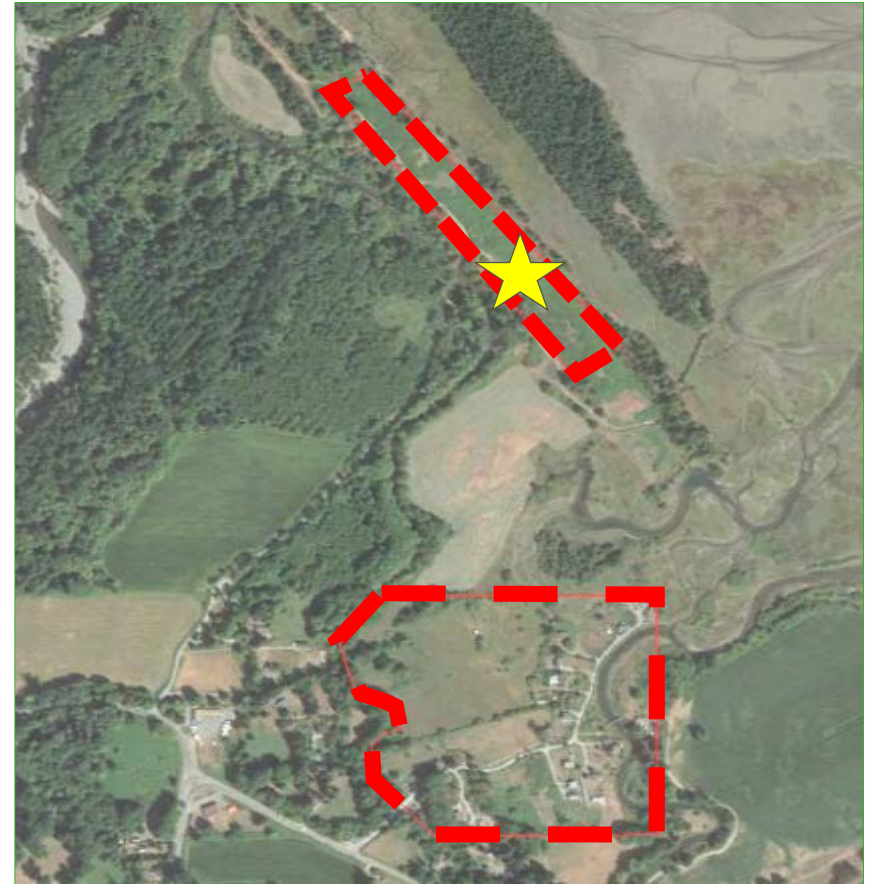


RESULTS: Tsussie 6

PENELAKUT TRIBE PHASE I ESA

APEC T06-6: Off-Site

- Swallowfield Road Landfill
- Recommendations:
 - Surface water and sediment sampling along Bonsall Creek
 - Drilling program to test quality of soil and groundwater



RESULTS: Penelakut Island 7

PENELAKUT TRIBE PHASE I ESA

APEC P07-1:

- Potential creosote wood pilings at Penelakut Spit
- Recommendations:
 - Remove wood pilings
 - Soil sampling program to assess quality of soil along bank of Bonsall Creek



RESULTS: Penelakut Island 7

PENELAKUT TRIBE PHASE I ESA

APEC P07-2:

- Storage yard near school: vehicles, equipment, portable fuel tank



RESULTS: Penelakut Island 7

PENELAKUT TRIBE PHASE I ESA

APEC P07-2:

- Storage yard near school: vehicles, equipment, portable fuel tank
- Recommendations:
 - Drip trays for tank, equipment and storage shed
 - Soil sampling program to assess quality of soil in the area



RESULTS: Penelakut Island 7

PENELAKUT TRIBE PHASE I ESA

APEC P07-3:

- Wooden boat lift: boat repairs



RESULTS: Penelakut Island 7

PENELAKUT TRIBE PHASE I ESA

APEC P07-3:

- Wooden boat lift: boat repairs
- Recommendations:
 - Sediment sampling program to assess quality of sediments near the boat lift

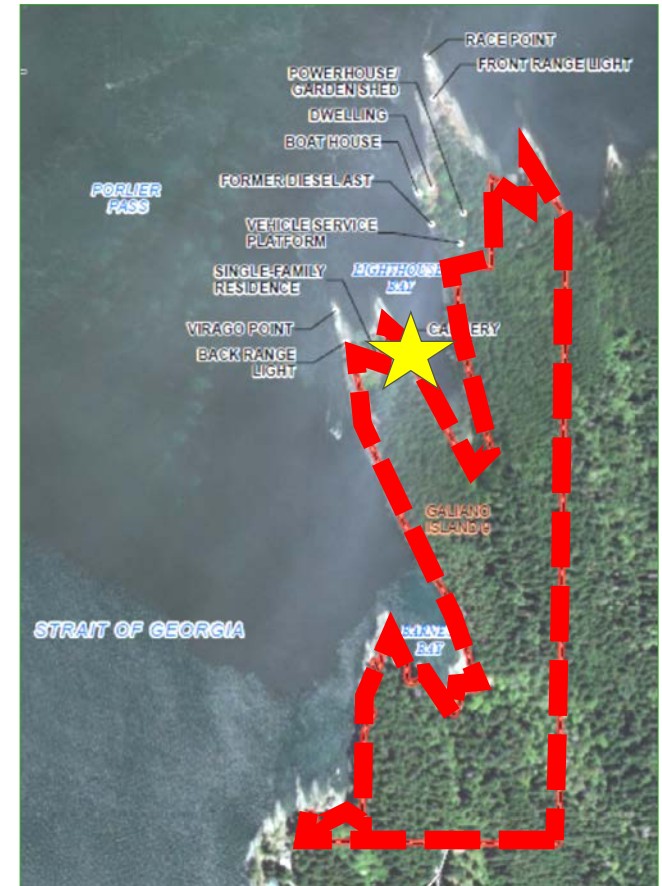


RESULTS: Galiano Island 9

PENELAKUT TRIBE PHASE I ESA

APEC G09-1:

- Cannery – soil quality from cannery operations



RESULTS: Galiano Island 9

PENELAKUT TRIBE PHASE I ESA

APEC G09-1:

- Cannery – soil quality from cannery operations
- Recommendations:
 - Soil and sediment sampling program to assess quality of soil and sediment in the area
 - Test contents of the tanks

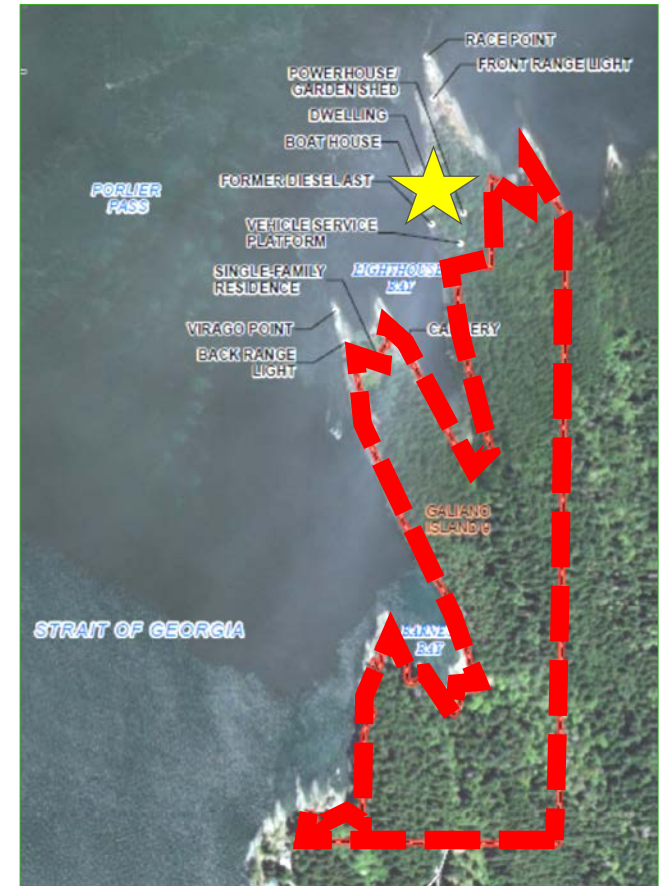


RESULTS: Galiano Island 9

PENELAKUT TRIBE PHASE I ESA

Lightstation off-Reserve:

- No APECs



Next Steps

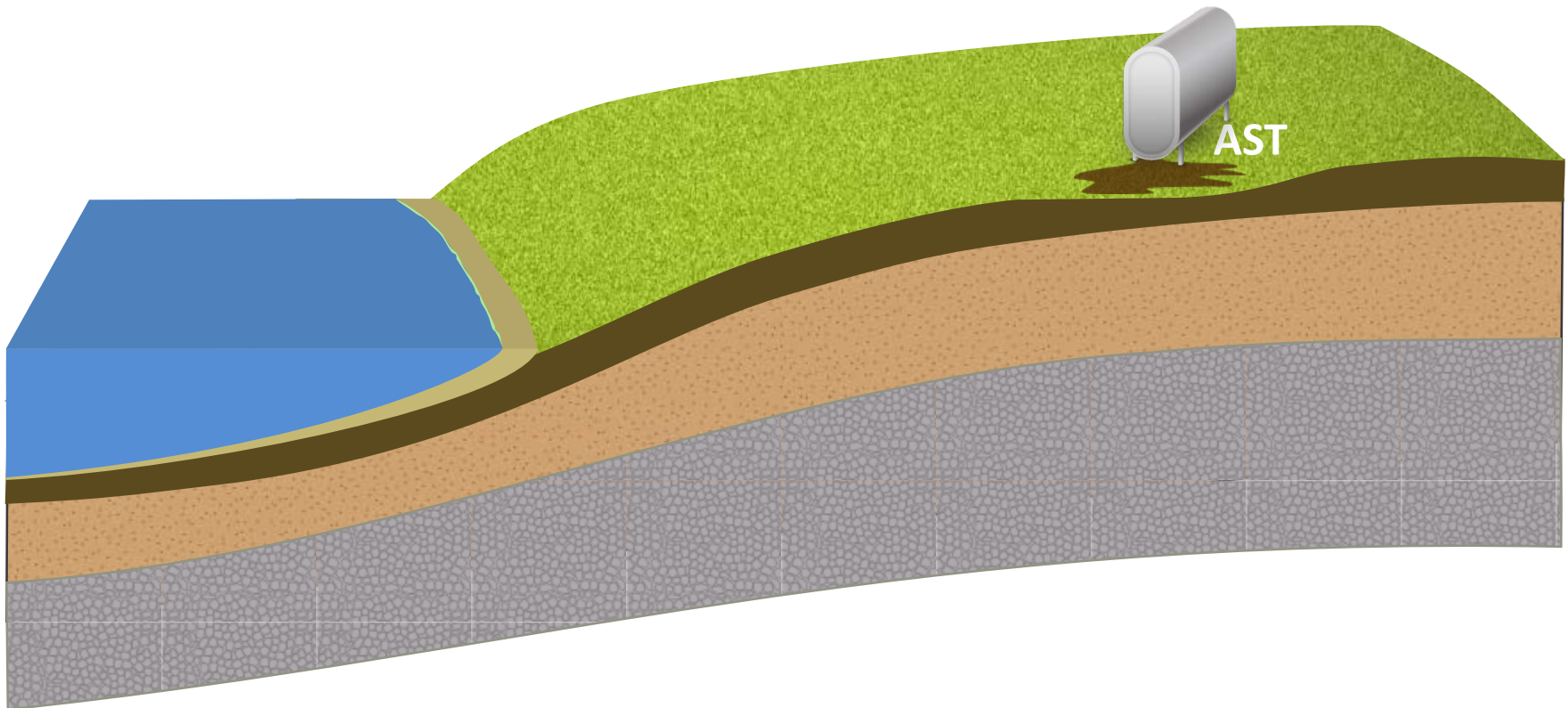
PENELAKUT TRIBE PHASE I ESA



Next Steps

PENELAKUT TRIBE PHASE I ESA

Phase I ESA

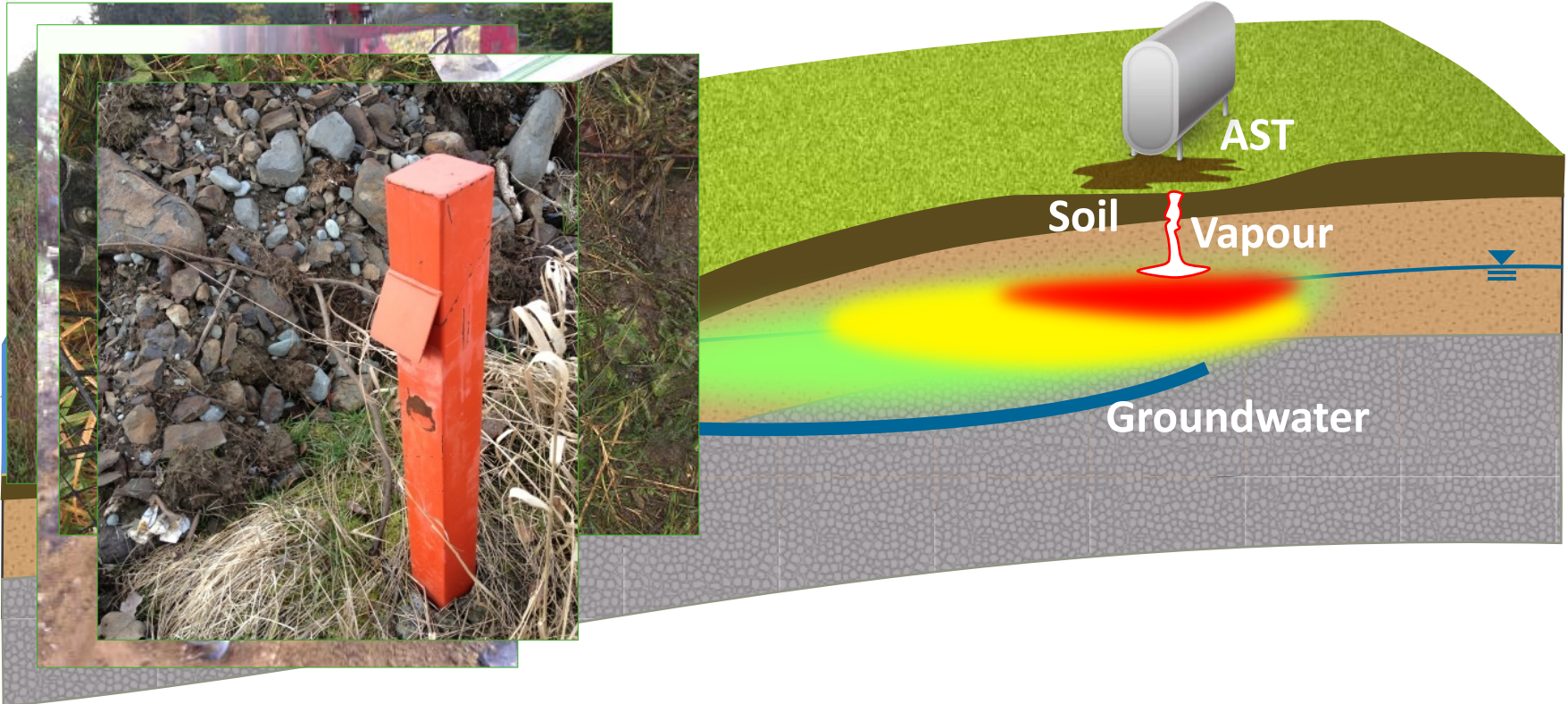


Next Steps

PENELAKUT TRIBE PHASE I ESA

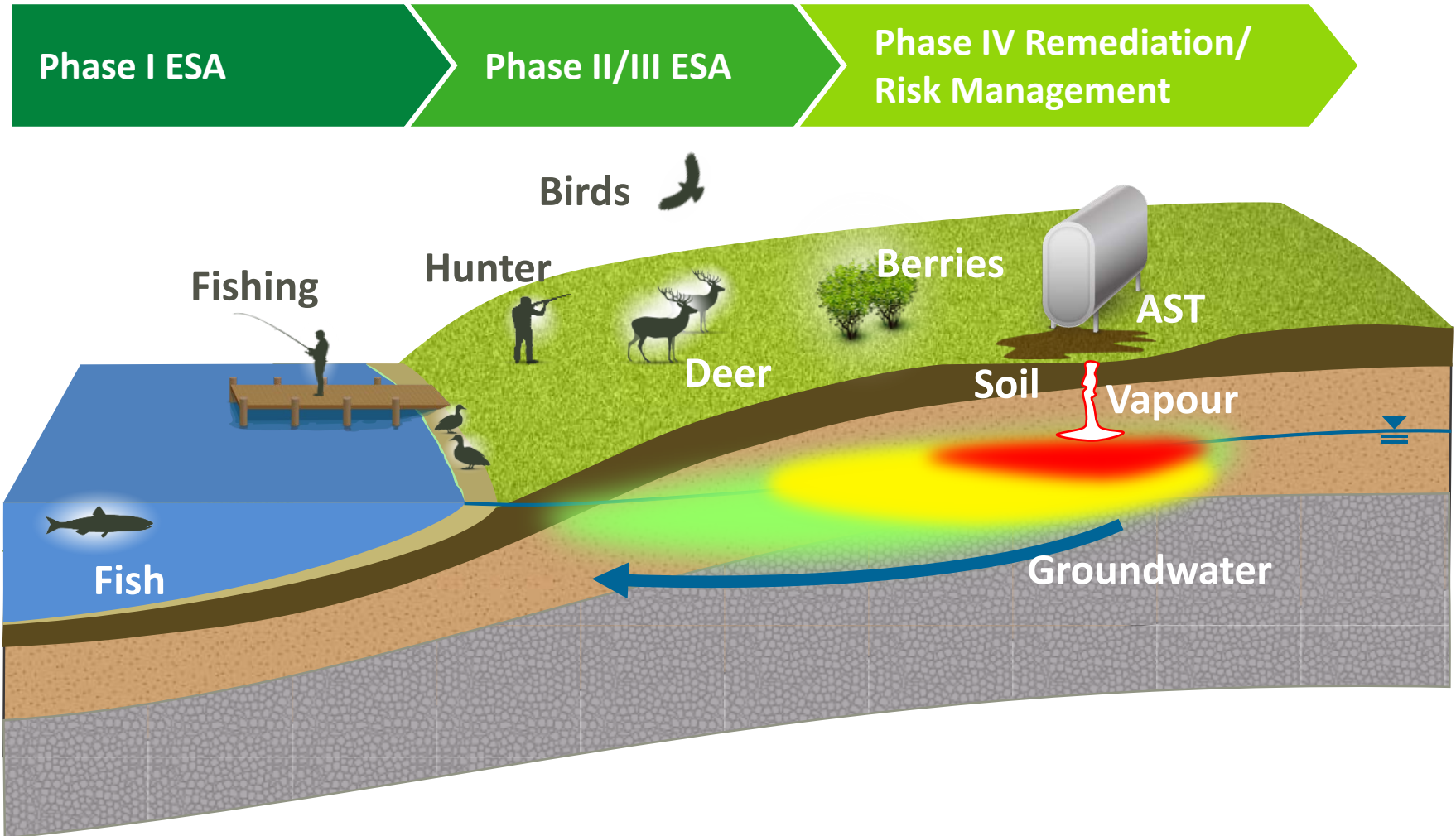
Phase I ESA

Phase II/III ESA



Next Steps

PENELAKUT TRIBE PHASE I ESA





Questions?